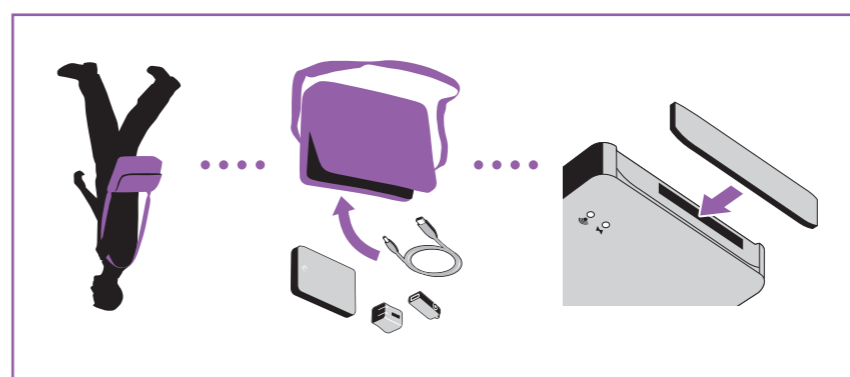
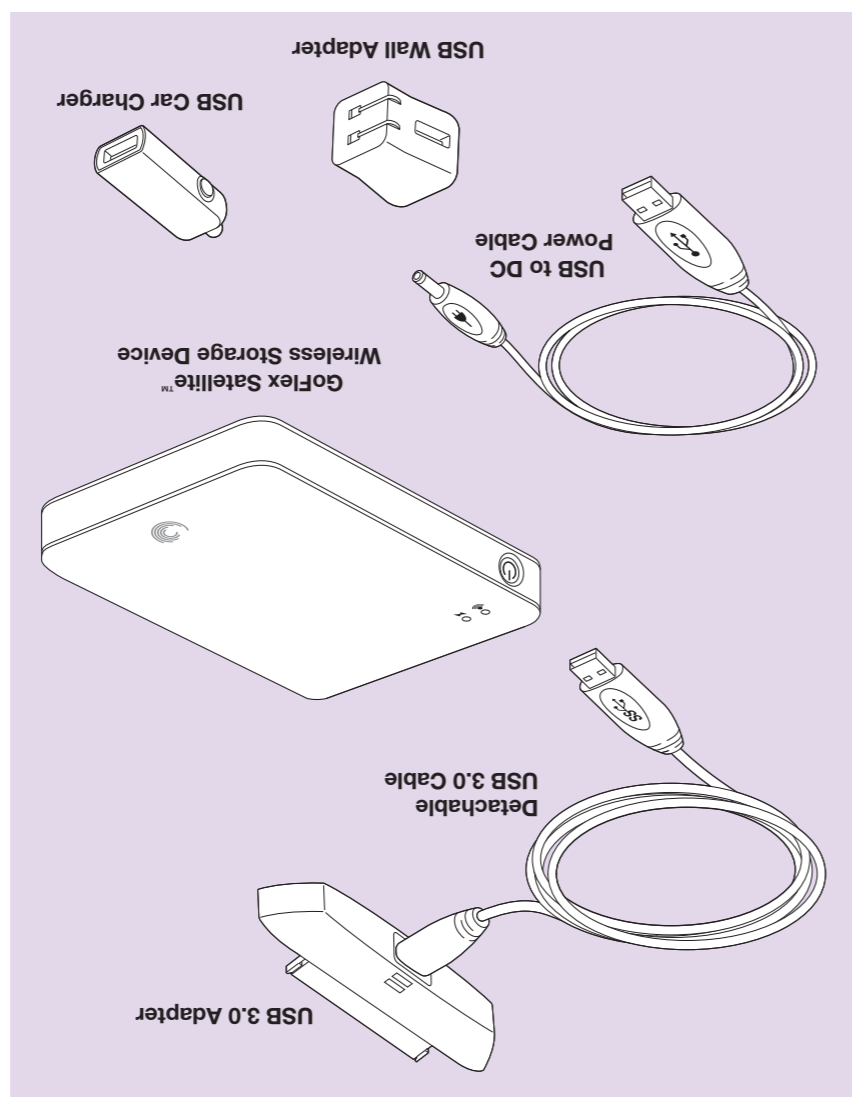


Seagate GoFlex SatelliteQuick Start Guide-ENGLISH
 Part Number: 100663506 03/11
 Folded Size: 122mm W x 155mm H
 Trim Size: 244mm W x 310mm H
 Colors: 2C/2C

PANTONE 2582

K

QSG for Satellite Bundle-ENGLISH



Portable Solution



WWW.SEAGATE.COM

Additional software assistance is available by clicking **HELP** in the software menu. Visit us at our **Support** pages for assistance with:

- **Installation:** Additional instructions and troubleshooting assistance
- **Knowledge Base:** FAQ's, How to use this product
- **Download Center:** Installation software, utilities and diagnostics
- **Warranty Information**
- And all of your other storage needs

To contact support, visit us at our **Contact Us** page.
NOTE: To protect your data, always follow the safe removal procedures for your operating system when disconnecting your product.

This product contains a lithium-ion battery and must be disposed of properly. See www.seagate.com for information about recycling and proper disposal.

FCC DECLARATION OF CONFORMANCE
 This device complies with Part 15 of the FCC Rules. Operation is subject to the following two conditions: (1) this device may not cause harmful interference, and (2) this device must accept any interference received, including interference that may cause undesired operation.

CLASS B
 This equipment has been tested and found to comply with the limits for a Class B digital device, pursuant to Part 15 of the FCC Rules. These limits are designed to provide reasonable protection against harmful interference in residential installation. This equipment generates, uses, and can radiate radio frequency energy and, if not installed and used in accordance with the instructions, may cause harmful interference to radio communications. However, there is no guarantee that interference will not occur in a particular installation. If this equipment does cause harmful interference to radio or television reception, which can be determined by turning the equipment off and on, the user is encouraged to try to correct the interference by one or more of the following measures:

- Reorient or relocate the receiving antenna.
- Increase the separation between the equipment and receiver.
- Connect the equipment into an outlet on a circuit different from that to which the receiver is connected.
- Consult the dealer or an experienced radio/TV technician for help.

CAUTION: Any changes or modifications made to this equipment may void the user's authority to operate this equipment.

QUICK START GUIDE



© 2011 Seagate Technology LLC. All rights reserved. Seagate, Seagate Technology, the Wave logo, and GoFlex are trademarks or registered trademarks of Seagate Technology LLC, or one of its affiliated companies in the United States and/or other countries. All other trademarks or registered trademarks are the property of their respective owners. Seagate reserves the right to change, without notice, product offerings or specifications. The export or re-export of hardware or software containing encryption may be regulated by the U.S. Department of Commerce, Bureau of Industry and Security (for more information, visit www.bis.doc.gov) and controlled for import and use outside of the U.S.

Seagate Technology LLC
 920 Disc Drive
 Scotts Valley, CA 95066
 U.S.A.



PN: 100663506 03/11



1

For faster transfer speeds, connect to a USB 3.0 port. Compatible with USB 2.0.

2

Your GoFlex Satellite device is designed to work across PCs and Macs.

Drag and drop files from your computer to your GoFlex Satellite device or use optional media synchronization software. Go to seagate.com/support/goflexsatellite to download the software.

Mac users: Double-click **Mac Installer.dmg**, located on the drive, to enable file copying from your Mac. *Do not reformat the drive.*

NOTE: Your iPad® (or other device) will only play files in the format it supports. See your device's specifications for details.

3

| | | | |
|--|---------------------------|--|-----------------------|
| | Green Blink = Starting up | | Green = Fully charged |
| | Blue Blink = Broadcasting | | Red = Requires charge |
| | | | Amber = Charging |

Your GoFlex Satellite device is partially charged and ready to use right out of the box. When the Power LED is red, charge the drive using the included USB to DC cable and USB wall adapter or car charger.

After pressing the Power button, the WiFi LED blinks blue within one minute, indicating your GoFlex Satellite device is ready to be accessed wirelessly.

4

iPad® Setup:

1. Open the App Store and search for "goflex media".
2. Install the GoFlex Media app.
3. On the iPad, choose **Settings > Wi-Fi** and then select **GoFlex Satellite** from the list of wireless networks.
4. From the Home screen, tap the GoFlex Media app to open the application.

Other Tablets, Smartphones and Computers:

1. Select **GoFlex Satellite** from your device's list of wireless networks.
2. After launching your device's Web browser, go to any URL to be automatically redirected to the GoFlex Satellite main page. You can also type www.goflexsatellite.com to access the GoFlex Satellite device. Also works on an iPad if the GoFlex Media app is not installed.

See the *GoFlex Satellite User Guide* online at seagate.com/support/goflexsatellite for complete instructions.

NOTE: To reconnect to the Internet from your iPad or other device, choose a wireless network other than GoFlex Satellite.