

**Only smart people
read the manual.**



Contents

Getting Started	1
Safely Turning Your Drive On and Off	1
Disconnecting eSATA and 1394 Devices	2
eSATA Devices	2
1394 Devices	3
Installing FreeAgent Tools and AutoBackup	4
Using the FreeAgent Tools and AutoBackup Icons	11
Changing Hardware Interfaces	12
Switching USB/eSata - 1394 Interfaces	12
Managing Your Drives	14
Backup & Restore	15
Registering AutoBackup	15
Creating a Backup Plan	16
System Rollback	22
Creating Automatic Restore Points	22
Creating Manual Restore Points	23
Rolling Back to a Restore Point	24
Undoing System Rollback	26
Turning Off Automatic Restore Points	27
Using the Internet Drive	29
Utilities	31
Running Drive Diagnostics	31
Adjusting Drive Sleep Intervals	33
Waking Your Drive from Sleep Mode	34
Adjusting the Drive Lights	35
Index	i

Getting Started

Safely Turning Your Drive On and Off

When you connect the power and data cables to your computer system, your FreeAgent™ drive spins up automatically.

To safely disconnect your Freeagent drive,

- Use the Safely Remove Hardware icon in the system tray.
— OR —
- Press the power switch on the base of the drive.

Note: *The drive cannot shut down while it's being accessed; wait until all operations have completed before shutting down.*

To safely disconnect your FreeAgent drive,

Step 1: Double- click the system tray Icon.

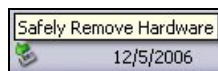


Figure 1: Safely Remove Hardware

The **Safely Remove Hardware** window opens:

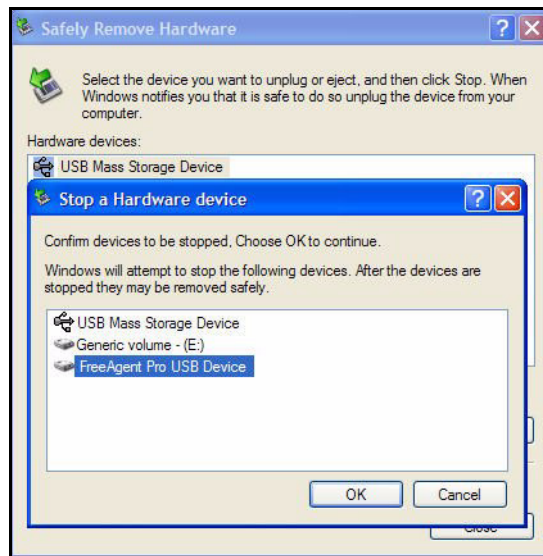


Figure 2: Safely Remove Hardware

Step 2: Choose the drive to disconnect and click **OK**.

The Safe to Remove Hardware confirmation appears:



Figure 3: Safe To Remove Hardware

Your FreeAgent drive powers itself down.

Disconnecting eSATA and 1394 Devices

Follow the same procedures as those listed in the previous section to safely remove the FreeAgent while it's connected via eSATA or 1394. The device icons and identification strings in the **Safely Remove Hardware** window differ slightly for each interface.

eSATA Devices

Here are the device icons and identification strings in the **Safely Remove Hardware** window for eSATA devices:

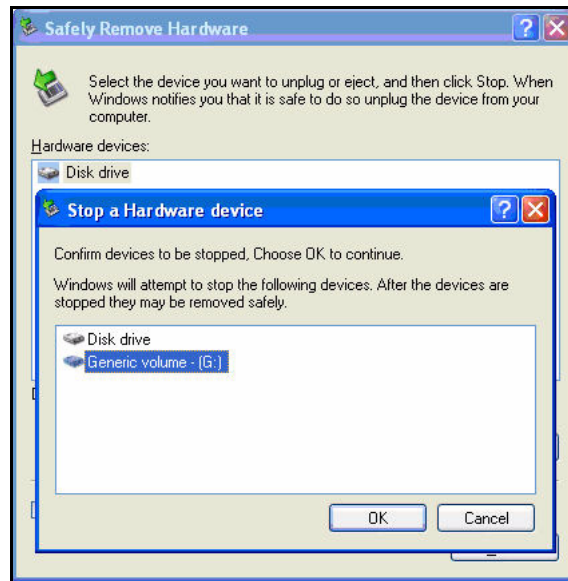


Figure 4: eSATA Safely Remove Hardware Messages

The FreeAgent drive is listed as a Disk drive in the **Safely Remove Hardware** window.

1394 Devices

Here are the device icons and identification strings in the **Safely Remove Hardware** window for 1394 devices:

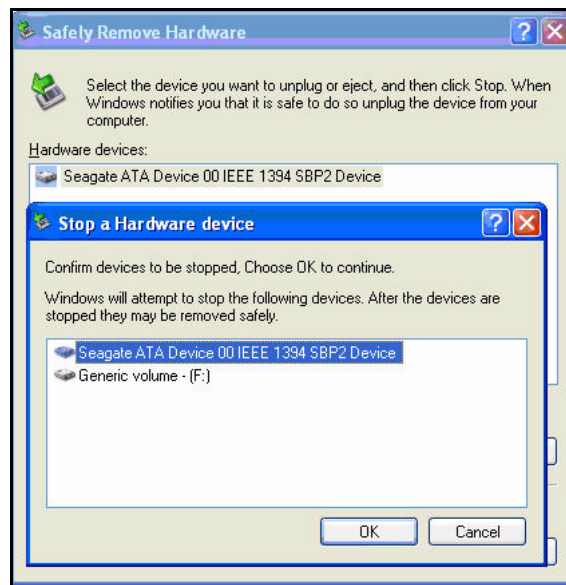


Figure 5: 1394 Safely Remove Hardware Messages

The FreeAgent drive is listed as an IEEE 1394 device in the **Safely Remove Hardware** window.

Caution: Never disconnect any of your FreeAgent devices while the lights are pulsing on the front of the unit. Pulsing lights indicate that the drive is in use and unplugging power or data cables while the drive is in use can cause data corruption or loss.

Installing FreeAgent Tools and AutoBackup

The software for both FreeAgent Tools and AutoBackup is already loaded on your FreeAgent drive and ready to be installed on your computer. The two applications are installed together.

To install the software,

Step 1: Connect your FreeAgent drive.

After a moment, the AutoStart window opens:

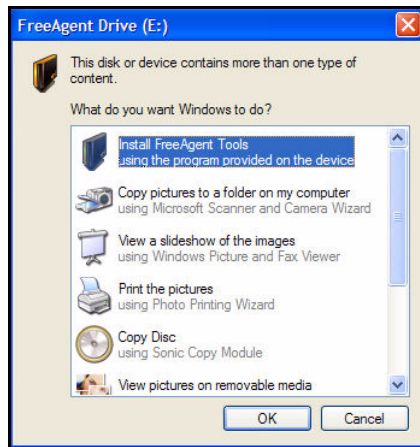


Figure 6: Windows XP AutoStart Window

Note: Drive letters are assigned by your Windows operating system.

Step 2: Select **Install FreeAgent Tools** and click **OK**.

The **InstallShield Wizard** setup window opens:

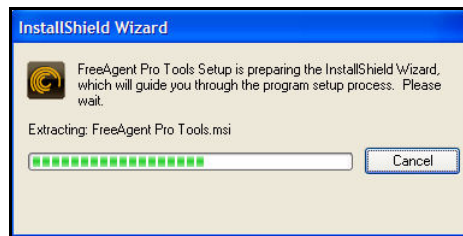


Figure 7: InstallShield Wizard Setup

The Welcome window opens:

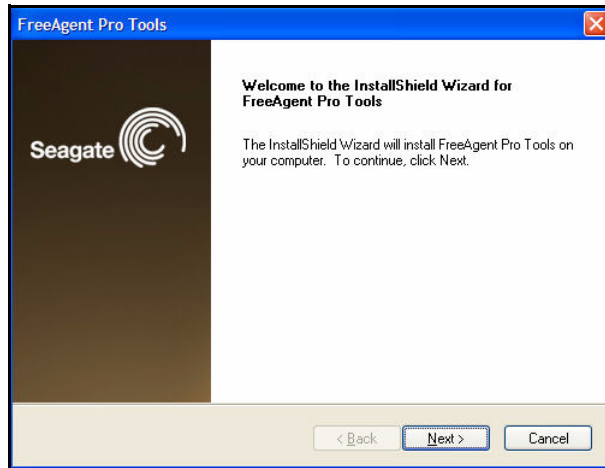


Figure 8: Welcome

Step 3: Click **Next**.

The **License Agreement** window opens:

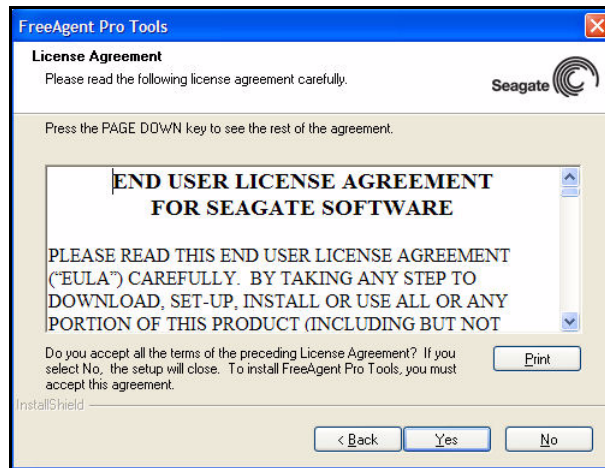


Figure 9: License Agreement

Step 4: Click **Yes** to agree to the terms of the agreement.

The **Choose Destination Location** window opens:

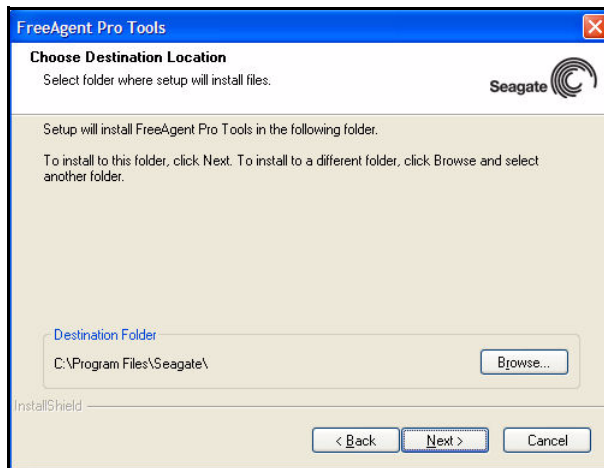


Figure 10: Choose Destination Location

Step 5: Select **Next** to accept the default destination location or **Browse** to select a different destination location.

The **Setup Status** window opens:

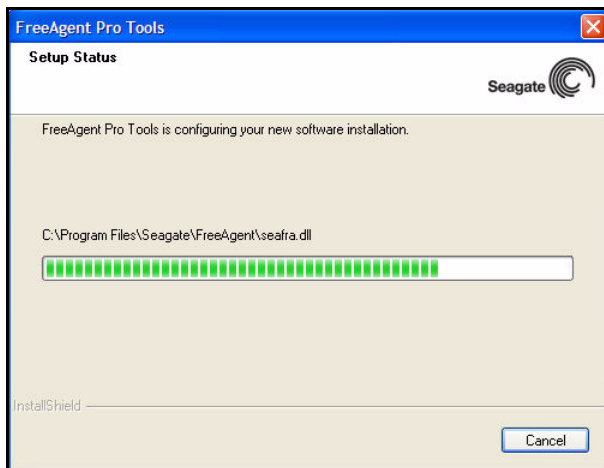


Figure 11: Setup Status

After the FreeAgent software has been installed, the AutoBackup **Welcome** window opens:

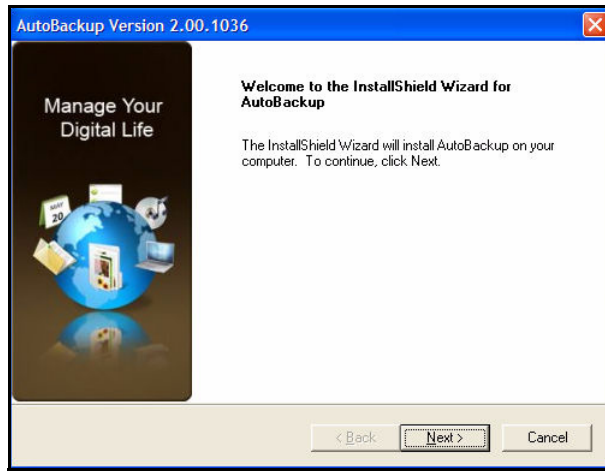


Figure 12: AutoBackup Welcome

Step 6: Click **Next**.

The AutoBackup software requires that Microsoft.NET Framework 1.1 be present on your system. If the AutoBackup software does not find .NET Framework 1.1, it installs it.

The AutoBackup **End User License Agreement** window opens:

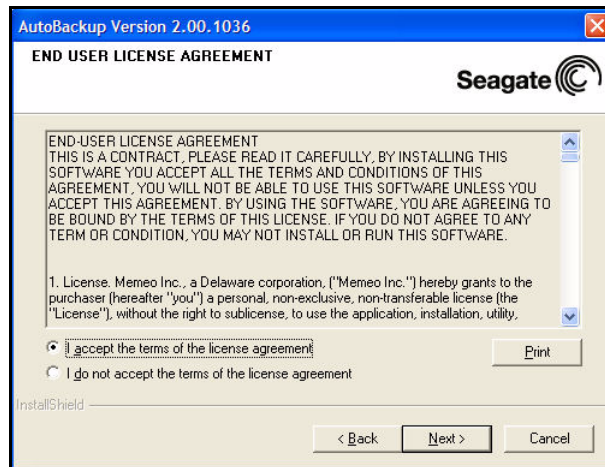


Figure 13: AutoBackup End User License Agreement.

Step 7: Select **I accept the terms of the license agreement** and click **Next**.

The AutoBackup **Setup Status** window opens:

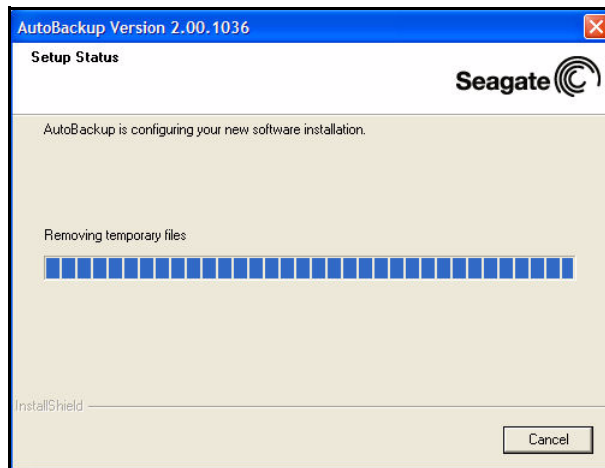


Figure 14: AutoBackup Setup Status

When the setup is complete, the AutoBackup **InstallShield Wizard Complete** window opens:

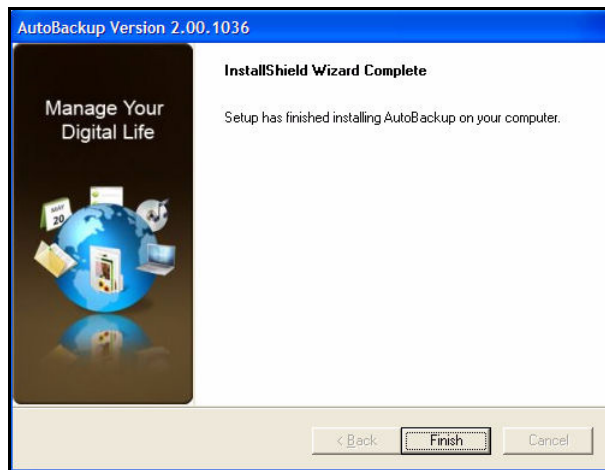


Figure 15: AutoBackup InstallShield Wizard Complete

Step 8: Select **Finish** to complete the AutoBackup install.

The FreeAgent **Registration** window opens:



Figure 16: FreeAgent Registration.

Step 9: Click **Register** to be redirected to the Seagate website if you want to register your FreeAgent drive now.

Step 10: Click **Next**.

The FreeAgent Tools **InstallShield Wizard Complete** window opens:

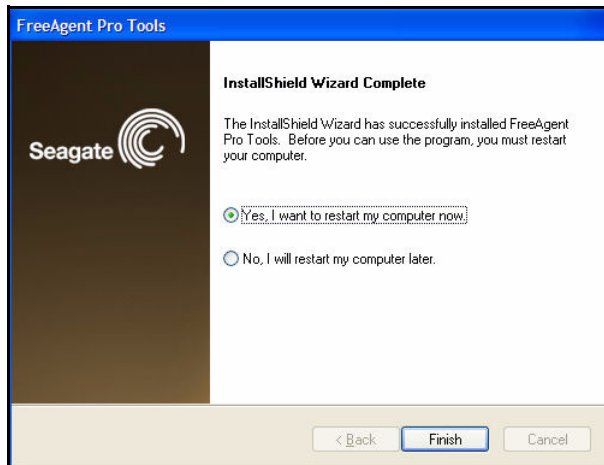


Figure 17: FreeAgent Tools InstallShield Wizard Complete

Step 11: Decide whether to restart your computer now and click **Finish**.

Note: After you restart your computer, you are guided through the process of registering and configuring the AutoBackup software. See the **Backup & Restore** chapter for further information on this process.

Using the FreeAgent Tools and AutoBackup Icons

After FreeAgent Tools and AutoBackup have been installed, FreeAgent Tools and AutoBackup icons are placed on your desktop and in your system tray. Double-click the desktop of the system tray icons to open the programs.

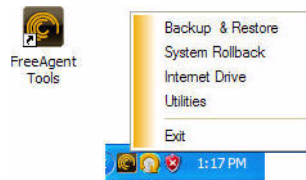


Figure 18: FreeAgent Tools Icons

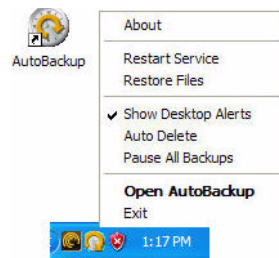


Figure 19: AutoBackup Icons

Changing Hardware Interfaces

The FreeAgent™ Pro is equipped with an interchangeable USB/eSATA, or 1394 module. The module is fastened to the base of the unit with a screw. The slot on the screw is curved to accommodate the edge of a coin. We recommend using a coin as a screwdriver when swapping interface modules.

Switching USB/eSata - 1394 Interfaces

Warning: Do not use a regular screwdriver to perform this operation.

To switch from one interface to another,

Step 1: Turn the drive off and remove all cabling.

Step 2: Flip the unit over and use a coin to loosen the screw by turning it counterclockwise. Use your fingers to unscrew it the rest of the way.

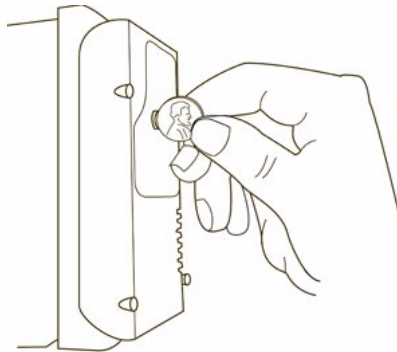


Figure 1: Loosen Module Screw

Step 3: After the screw is completely loose, use your fingernails to grasp the screw head and lift the module straight up from the base:

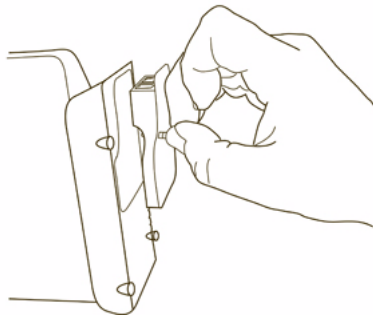


Figure 2: Lift Module From Base.

Step 4: Holding the replacement interface module by its edges, lower it straight down into the base:

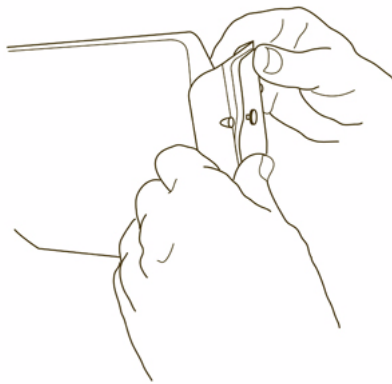


Figure 3: Press Module into Base

Step 5: Lightly press the module into place using your thumbs until the edges of the module are flush with the base.

Step 6: Turn the screw clockwise with your fingers as far as you can.

Step 7: Use the coin to turn the screw clockwise no more than a final 1/4 of a turn. The screw needs to be just tight enough to keep it snug against the base.

Managing Your Drives

The **Your Drives** window provides a central point from which to manage your FreeAgent™ drives. It displays all FreeAgent portable and desktop devices connected to your computer:

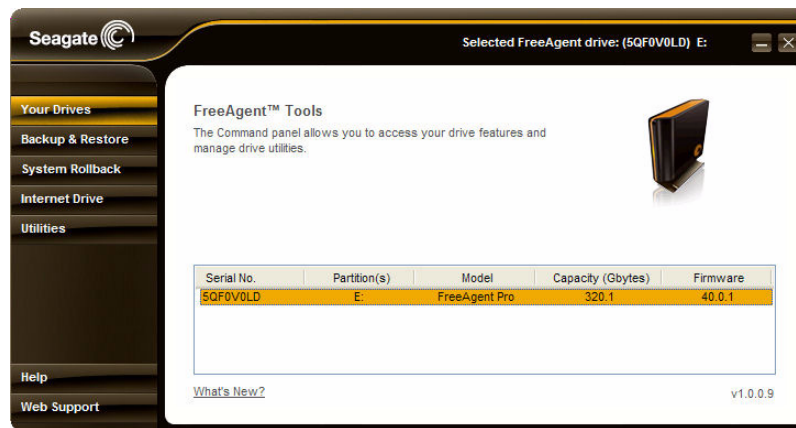


Figure 1: Your Drives Window

The Command panel allows you to access your drive features and manage drive utilities.

In the **Your Drives** window,

Step 1: Select a drive to manage from the list.

Step 2: Select an option from the Command panel on the left.

Note: The **Your Drives** window automatically detects all FreeAgent drives connected to your computer. If your drive is not displayed, make sure it's properly connected and turned on.

Backup & Restore

The AutoBackup software included with your FreeAgent™ drive allows you to back up folders on your network, Flash Drives, and iPods; back up over the Internet; and use Shutterfly to share photos over the Internet.

Registering AutoBackup

You must register your AutoBackup software before you can use the AutoBackup program. To complete the registration, you need the AutoBackup Product Key attached to the *Quick Start Guide* in your FreeAgent drive shipping carton.

Note: An Internet connection is required to complete AutoBackup registration.

After you've installed the FreeAgent Tools and AutoBackup software and have restarted your computer, the AutoBackup registration window opens:

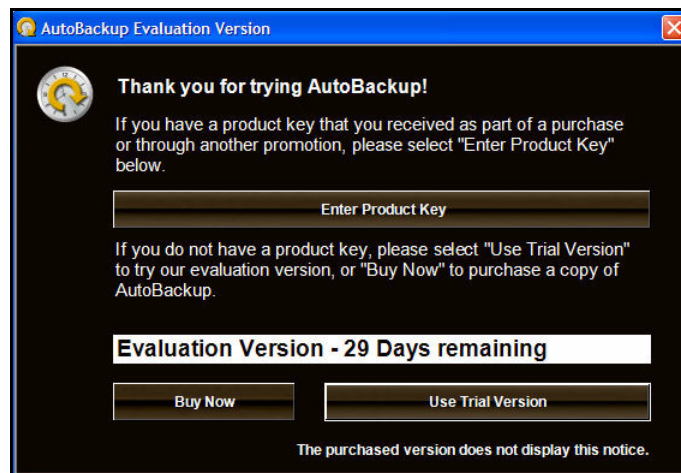


Figure 1: AutoBackup Registration

Note: Once you enter your Product Key, your version of AutoBackup is no longer labeled an **Evaluation Version**.

Step 1: Click **Enter Product Key**.

The **Enter Product Key** window opens:



Figure 2: Enter Product Key

Step 2: Enter your product key (found on the Quick Start Guide included in your FreeAgent drive shipping carton) and email address,

Step 3: Click **OK**.

Creating a Backup Plan

You create a backup plan to tell Autobackup what files to back up, how many versions to keep, and whether to encrypt those files.

After product registration is completed, the **Backup Destination** window opens:

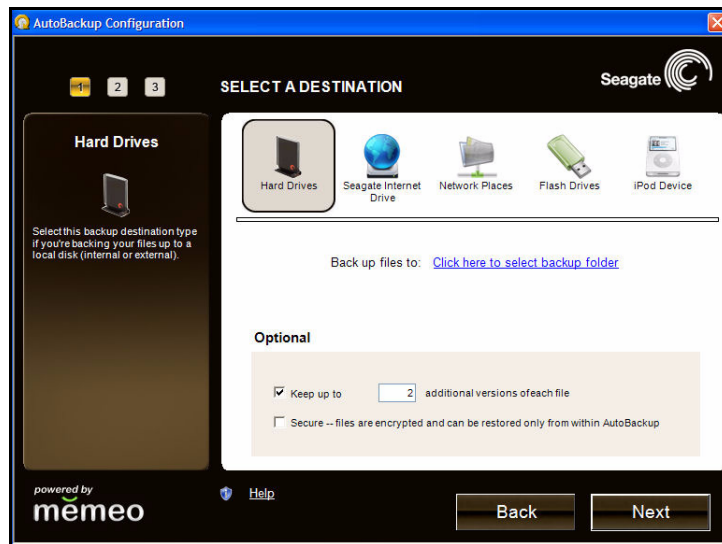


Figure 3: Destination Selection

Step 1: Verify that your FreeAgent drive is selected and click **Next**.

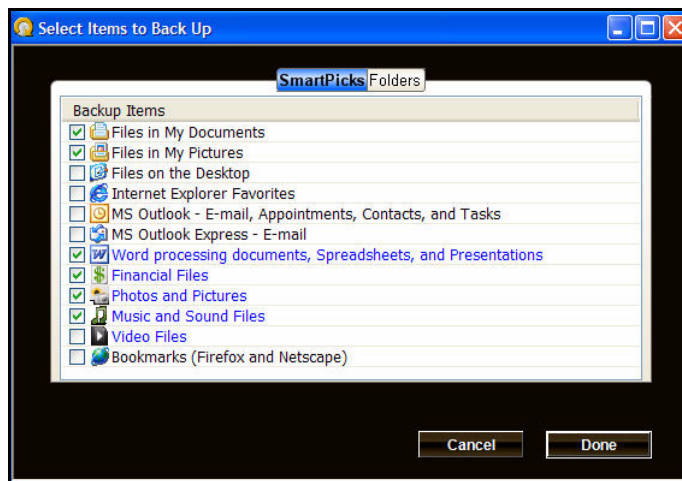


Figure 4: Smart Picks

Step 2: Check the boxes next to the files and folders you want backed up and click **Done**.
The **AutoBackup File Tally** window opens:

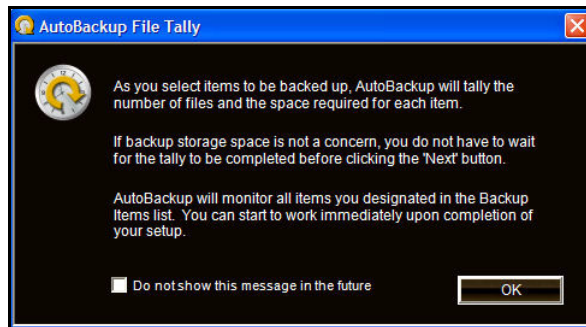


Figure 5: AutoBackup File Tally

Step 3: Check **Do not show this message in the future** if you don't want to see this window again and click **OK**.

The **Select Items to Back Up** window opens:

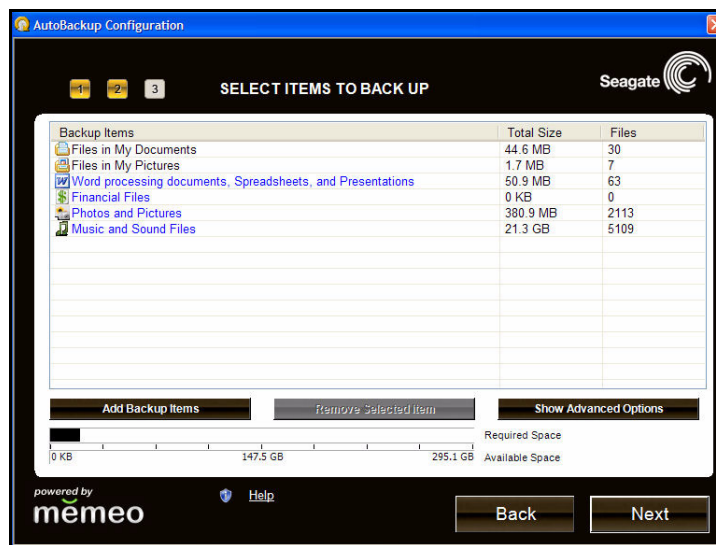


Figure 6: Select Items to Back Up

Step 4: Verify the files and folders you have selected for backup and click **Next**.

The **Provide Backup Plan Name** window opens:

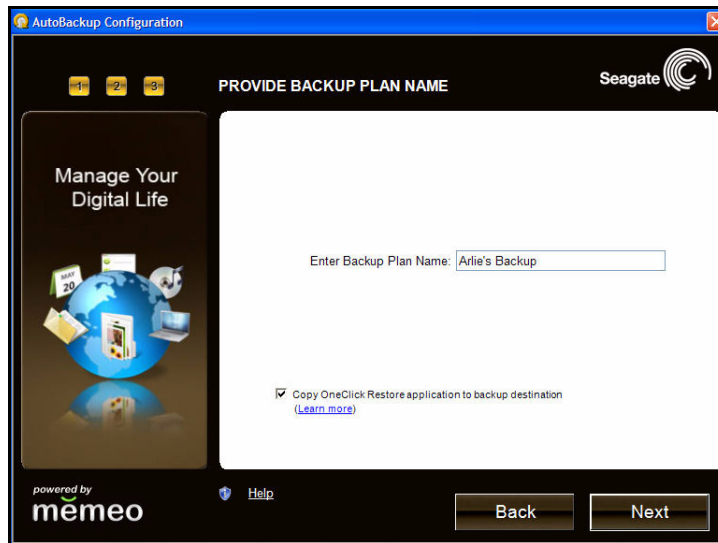


Figure 7: Provide Backup Plan Name

Step 5: Enter a name for your Backup Plan and click **Next**.

A Backup Plan Confirmation window opens:

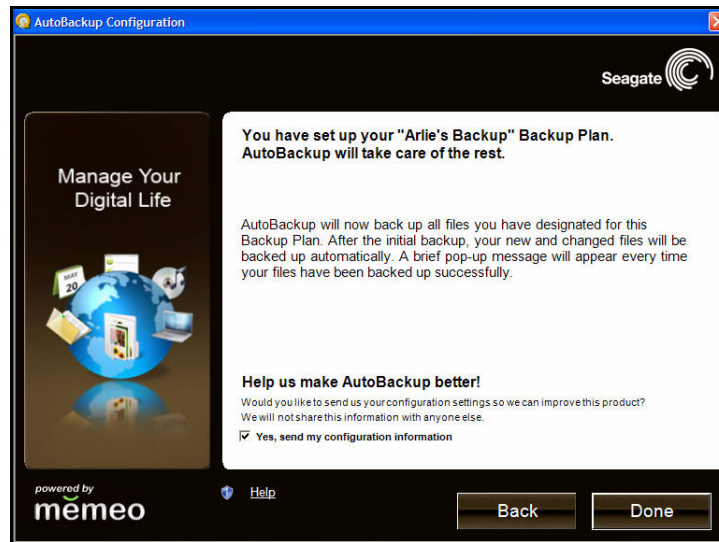


Figure 8: Backup Plan Confirmation

Step 6: Verify your backup plan is correct and click **Done**.

A window opens showing the progress of your backup:

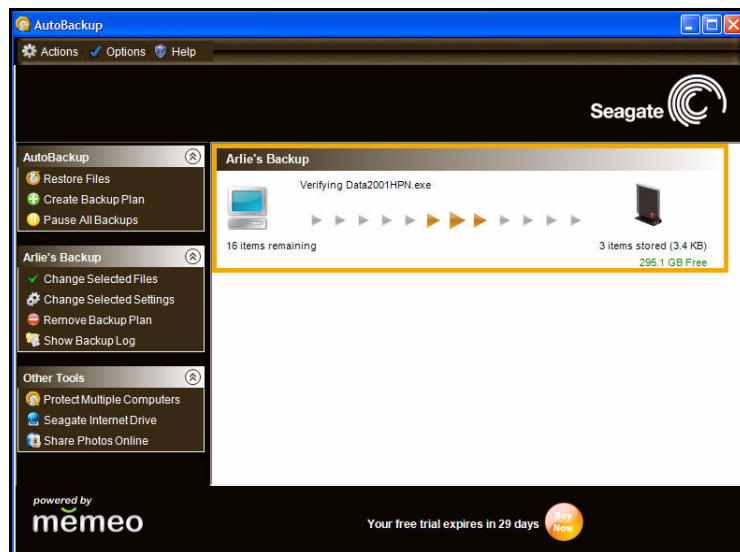


Figure 9: Backup Progress

The amount of time it takes to complete your first backup depends upon how much data you've selected for backup.

When your backup has been completed, the Backup Complete window opens with a summary of your Backup information:

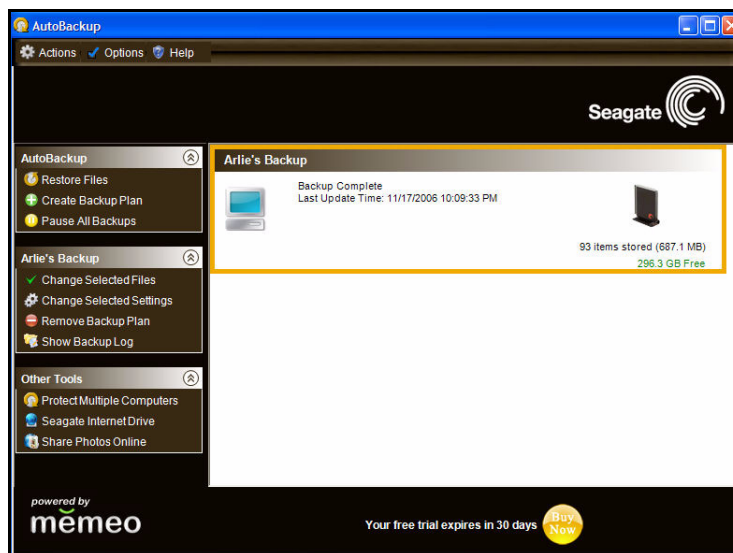


Figure 10: Backup Complete

After your first backup, the AutoBackup software monitors file and folder changes and automatically backs up whenever your system is idle. Any time your FreeAgent drive is disconnected from your computer, AutoBackup builds a list of the files that have changed

since the last backup and automatically backs up those files once your drive is re-connected.

For more information on AutoBackup features, visit www.memeo.com.

System Rollback

You can use FreeAgent™ Tools System Rollback to return your computer to an earlier state, called a Restore Point, if you have a system failure or other major problem with your computer. System Rollback restores your system to a workable state without your having to reinstall the operating system and lose your data files in the process.

System Rollback takes snapshots of your computer system and saves them as Restore Points called check points. These Restore Points mark places to return to in the event of a problem with your computer. You should create a Restore Point before you make a system change, such as adding new software or hardware or changing your system settings.

You can create system Restore Points in two ways:

- Automatically at predetermined intervals
- Manually any time you wish

Creating Automatic Restore Points

To create automatic Restore Points,

Step 1: Click **System Rollback** on the Command panel.

The Rollback window opens:

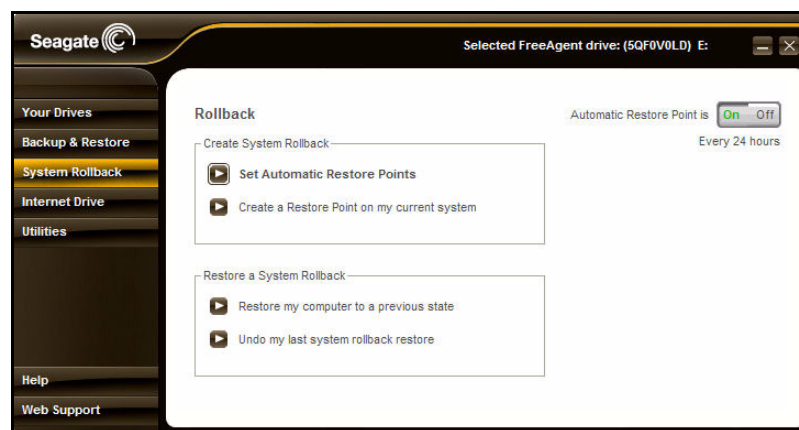


Figure 1: Rollback

Step 2: Click **Set Automatic Restore Points**.

The **Rollback: Set Automatic Restore Points** window opens:

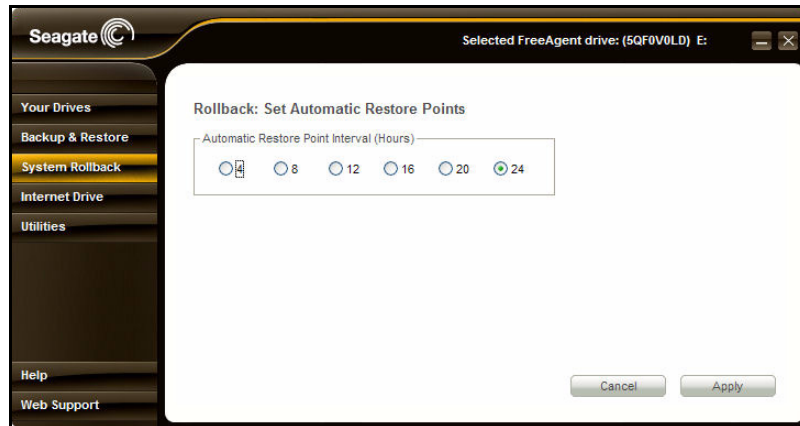


Figure 2: Rollback: Set Automatic Restore Points

Step 3: Select an **Automatic Restore Point Interval** and click **Apply**.

Creating Manual Restore Points

To manually create a restore point,

Step 1: Click **System Rollback** on the Command panel.

The Rollback window opens:

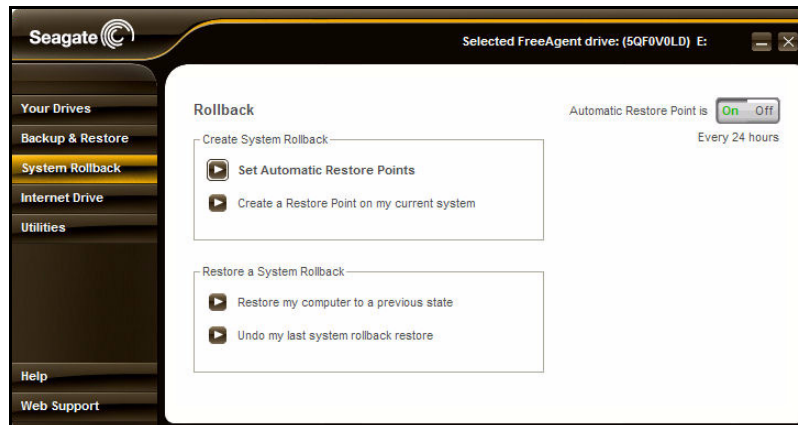


Figure 3: Rollback

Step 2: Click **Create a Restore Point on my current system**.

The **Rollback: Create Restore Point** window opens:

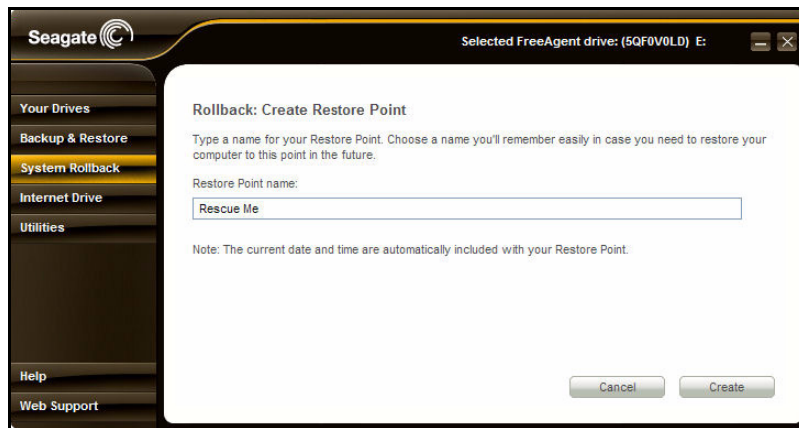


Figure 4: Rollback: Create Restore Point

Step 3: Name this restore point and click **Create**.

A **Create Restore Point** confirmation window displays the name and date of this Restore Point:

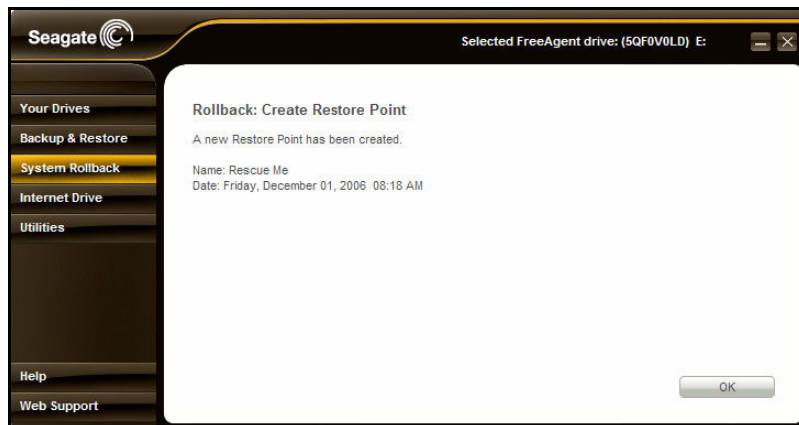


Figure 5: Create Restore Point Confirmation

Step 4: Choose **OK**.

Rolling Back to a Restore Point

To roll back your computer to a Restore Point,

Step 1: Save and close all open documents and applications (except for FreeAgent Tools).

Step 2: Click **System Rollback** on the Command panel.

The Rollback window opens:

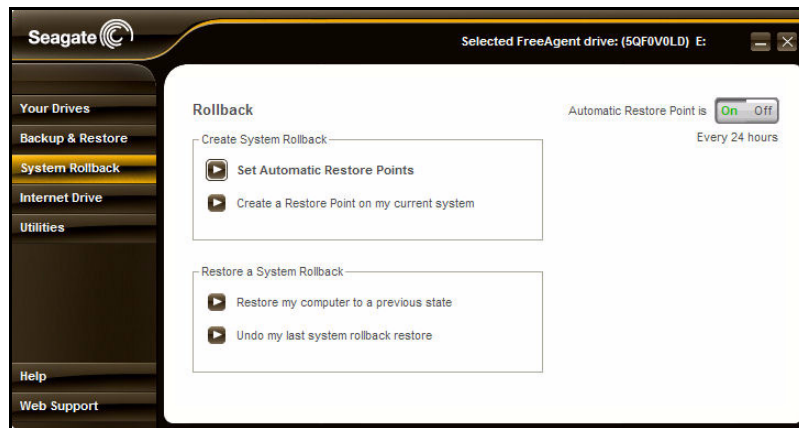


Figure 6: Rollback

Step 3: Click **Restore my computer to a previous state**.

The **Rollback: System Rollback** window opens:

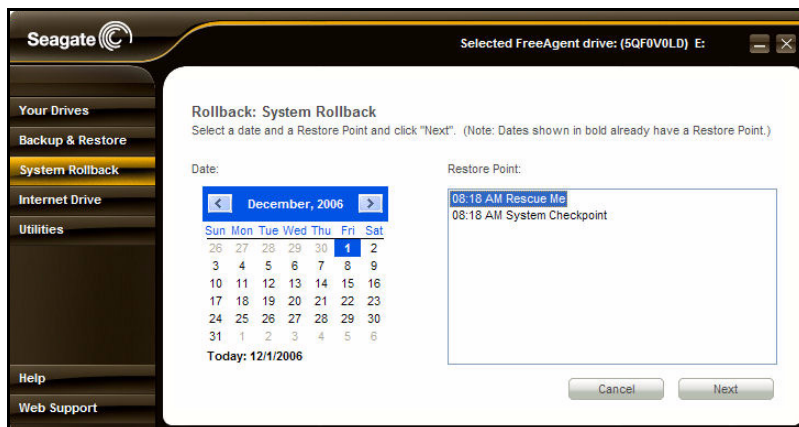


Figure 7: Rollback: System Rollback

Step 4: Select a restore date from the calendar and a time-stamped check point in the **Restore Point** window.

Step 5: Click **Next**.

The **System Rollback** confirmation window opens:

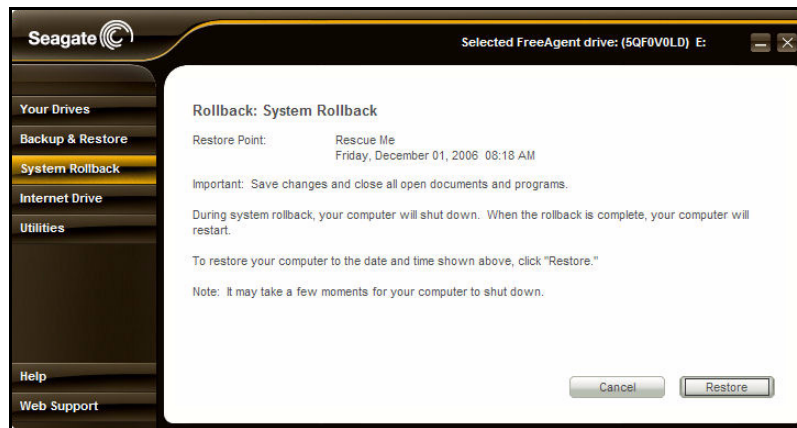


Figure 8: System Rollback Confirmation

Step 6: Click **Restore**.

Your system automatically shut s down. The restart process takes longer than normal. As the system rebuilds itself, a Restore dialogue box displays a **Restore in Progress** message before your system reboots.

Undoing System Rollback

To undo a system rollback and return to a current Restore Point,

Step 1: Save and close all open documents and applications (except for FreeAgent Tools).

Step 2: Click **System Rollback** on the Command panel.

The Rollback window opens:

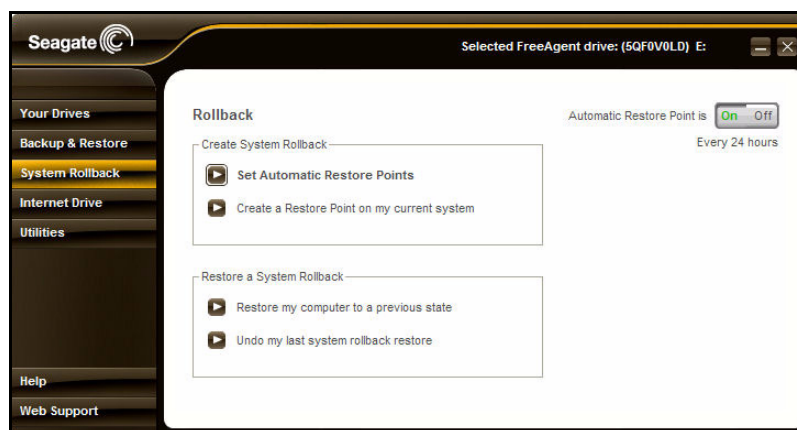


Figure 9: Rollback

Step 3: Click **Undo my last system rollback restore**.

The **Rollback: Undo** window opens:

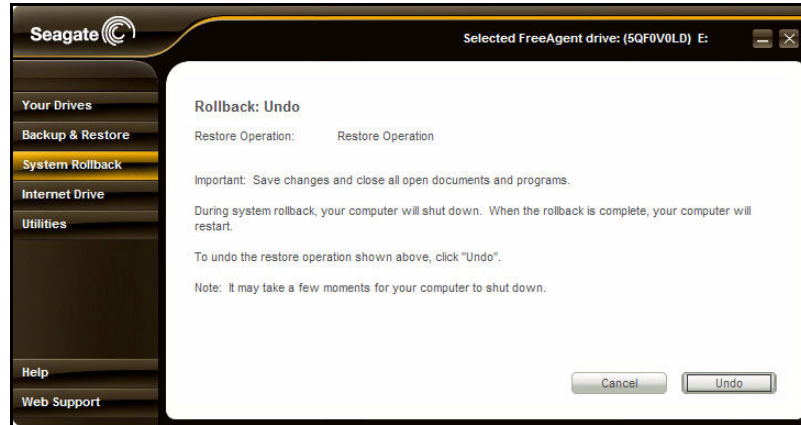


Figure 10: Rollback: Undo

Step 4: Click **Undo**.

Turning Off Automatic Restore Points

You can use the On/Off switch located in the upper right corner of the System Rollback window to turn off the Automatic Restore Points feature.

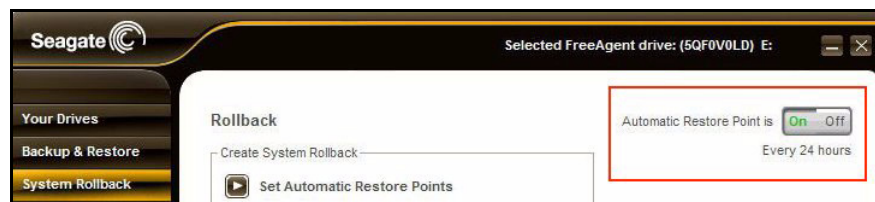


Figure 11: Rollback On/Off Switch

Warning: When you disable Automatic Restore Points, you delete all previously saved Restore Points.

To turn off Automatic Restore Points,

Step 1: Click **System Rollback** on the Command panel.

The Rollback window opens:

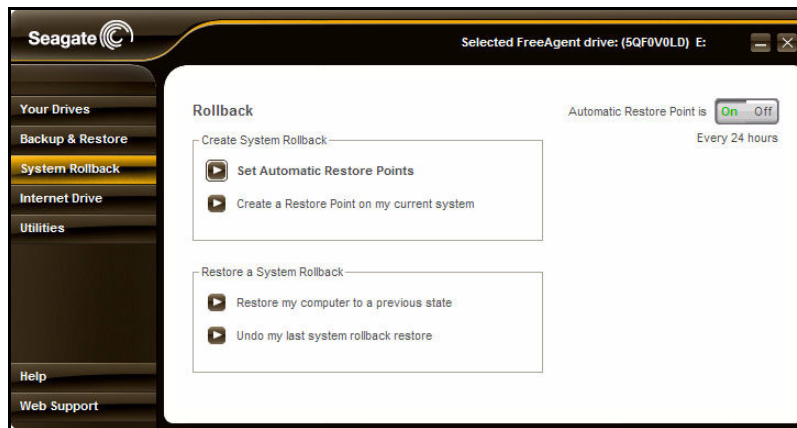


Figure 12: Rollback

Step 2: Toggle the On/Off switch to **Off**.

A confirmation window opens to verify that you want to turn off Automatic Restore Points:

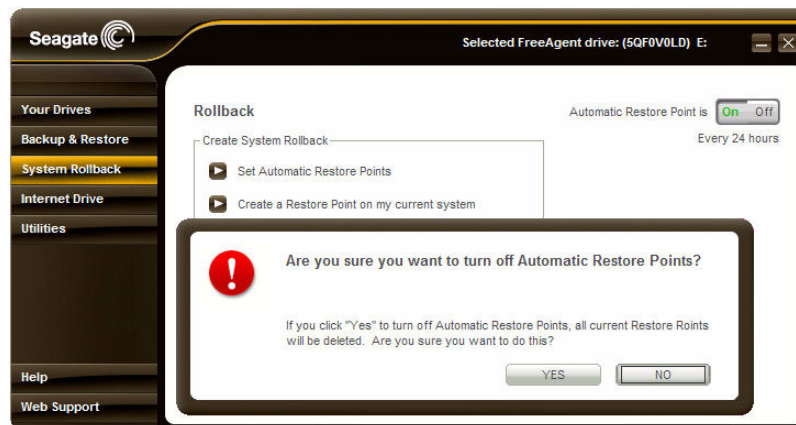


Figure 13: Restore Off

Step 3: If you are sure you want to disable System Restore, click **Yes**.

Using the Internet Drive

The Internet Drive lets you access your files from any computer and share them with anyone. The Internet Drive provides password-protected space on Seagate servers so you can store data that you want to access remotely or share with others.

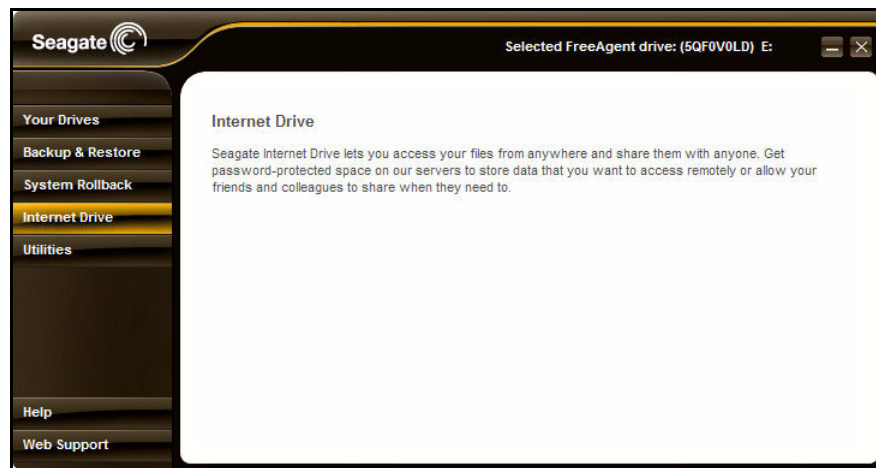


Figure 1: Internet Drive

To sign up for the Internet Drive,

Step 1: Click **Internet Drive** on the Command panel

— OR —

Click **Seagate Internet Drive** under **Other Tools** on the AutoBackup Command panel.

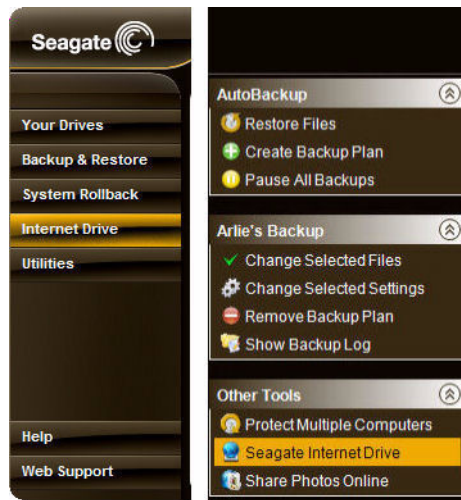


Figure 2: Internet Drive Access

The Seagate Internet Drive registration website page opens:

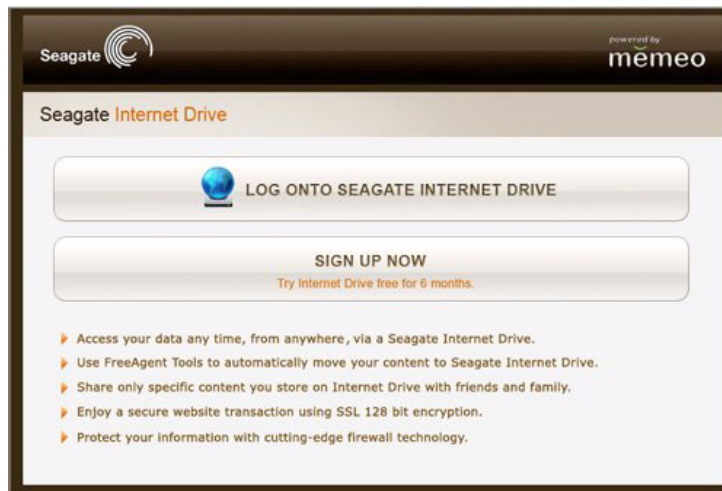


Figure 3: Seagate Internet Drive Registration Page

Step 2: Complete the registration form and sign in.

Utilities

The **Utilities** window allows you to run drive diagnostics and to adjust the drive sleep interval and the drive lights on your FreeAgent™ drive.

Note: *The Utilities features are not available while your drive is connected via the eSATA port. To run diagnostics, set sleep intervals, or adjust the drive lights, connect the drive through either the USB or the 1394 ports. After adjustments have been made, the eSATA port will reflect the lighting and sleep settings you specified using the USB or 1394 interface.*

Running Drive Diagnostics

You should run a diagnostic on your on your FreeAgent drive regularly as part of general maintenance. The health check determines hard disk integrity and can help troubleshoot potential problems with disk surface, partitioning, and drive recognition.

To run a drive diagnostic,

Step 1: Close all open files located on the FreeAgent drive.

Step 2: Click **Utilities** on the Command panel.

The **Utilities** window opens:

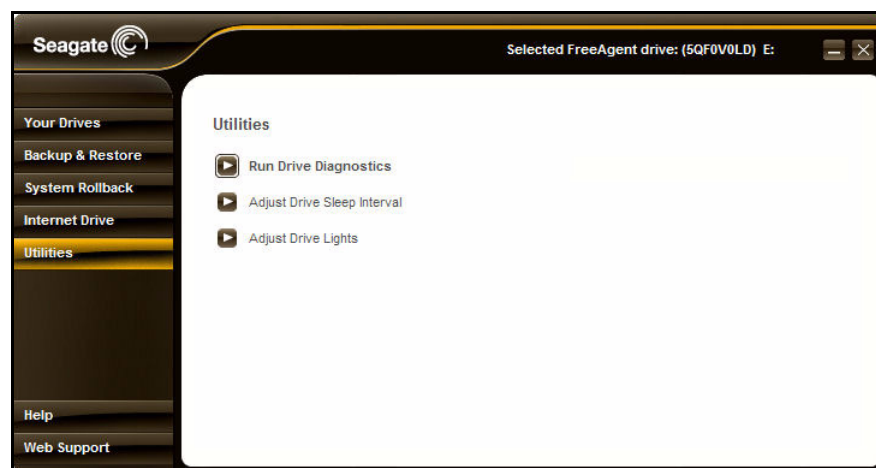


Figure 1: Drive Utilities

Step 3: Click **Run Drive Diagnostics**.

The **Run Drive Diagnostics** window opens:

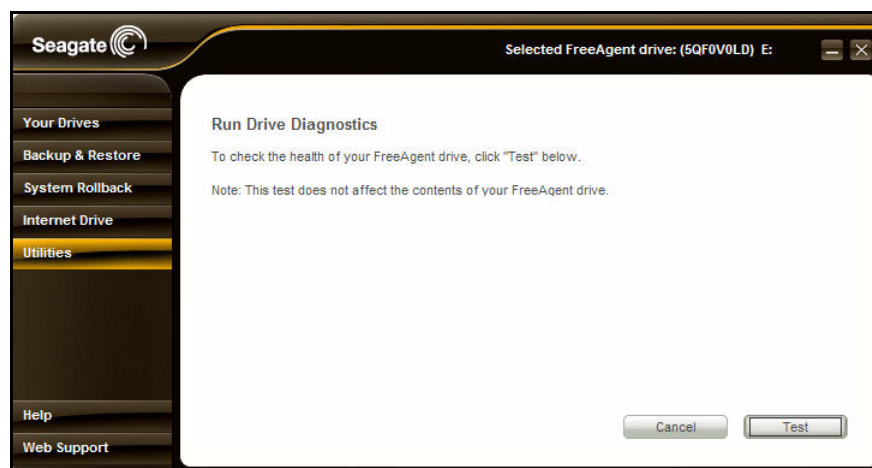


Figure 2: Run Drive Diagnostics

Step 4: Click **Test** to start the diagnostic.

The diagnostic utility performs its tests without affecting the data on your drive and takes only a few minutes to complete.

When the test is complete, the **Utilities** window displays the results:

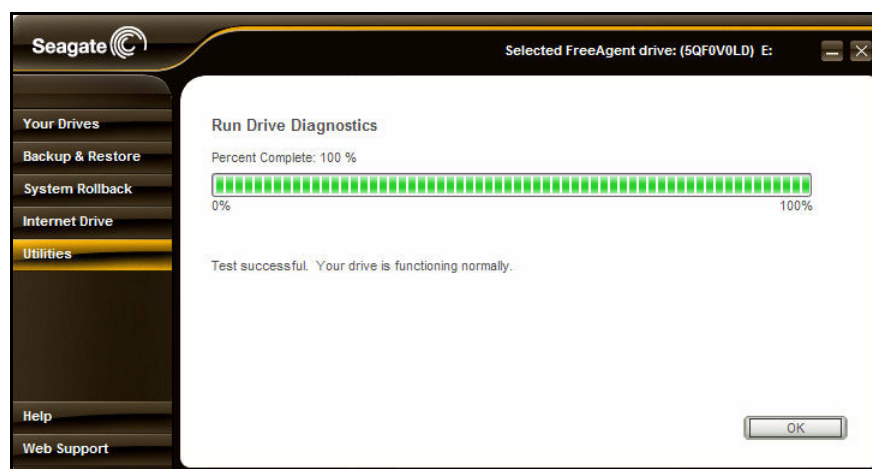


Figure 3: Drive Diagnostic Results

If the drive encounters an error during testing, the diagnostic displays an error code with instructions to contact Seagate for service and support.

Step 5: Click **OK** to return to the **Utilities** window.

Adjusting Drive Sleep Intervals

You can choose how long your FreeAgent drive can remain inactive before it goes into power-saving mode.

To adjust the drive sleep interval,

Step 1: Click **Utilities** on the Command panel.

The **Utilities** window opens:

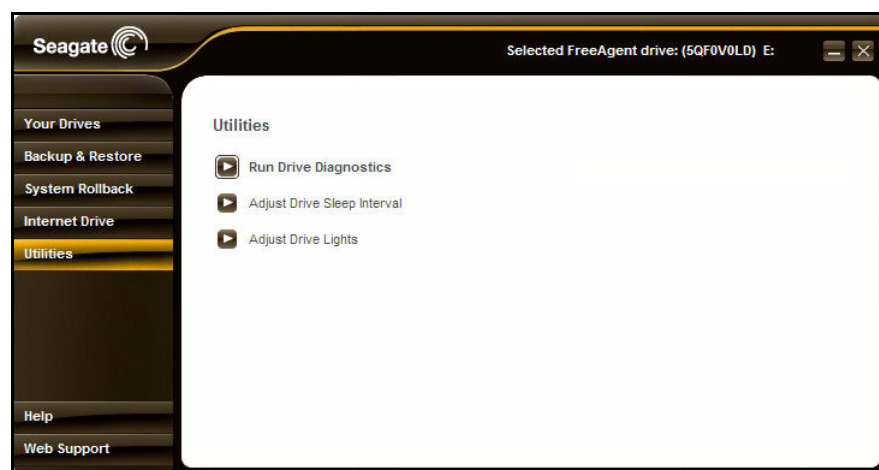


Figure 4: Utilities

Step 2: Click **Adjust Drive Sleep Interval**.

The **Adjust Drive Sleep Interval** window opens:

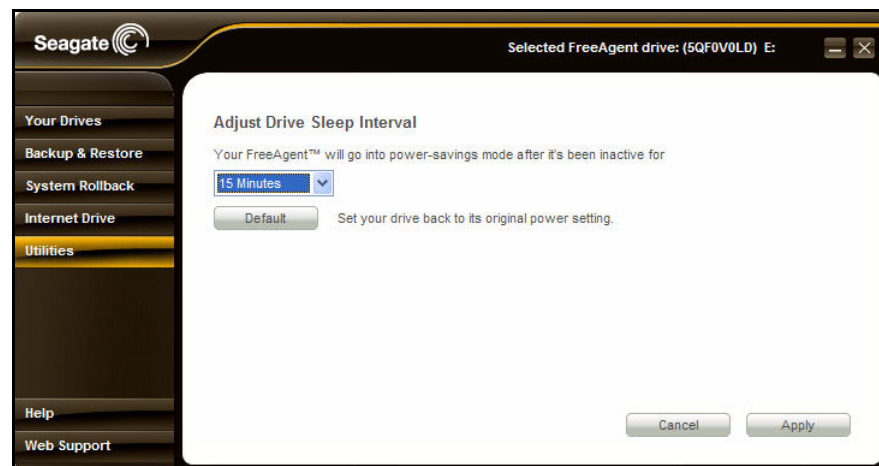


Figure 5: Adjust Drive Sleep Interval

Step 3: Select an interval from the dropdown menu or click **Default** to return to the default interval setting.

Step 4: Click **Apply** to save the Drive Sleep Interval setting.

The **Adjust Drive Sleep Interval** window confirms that the power setting for your Seagate drive has been changed.

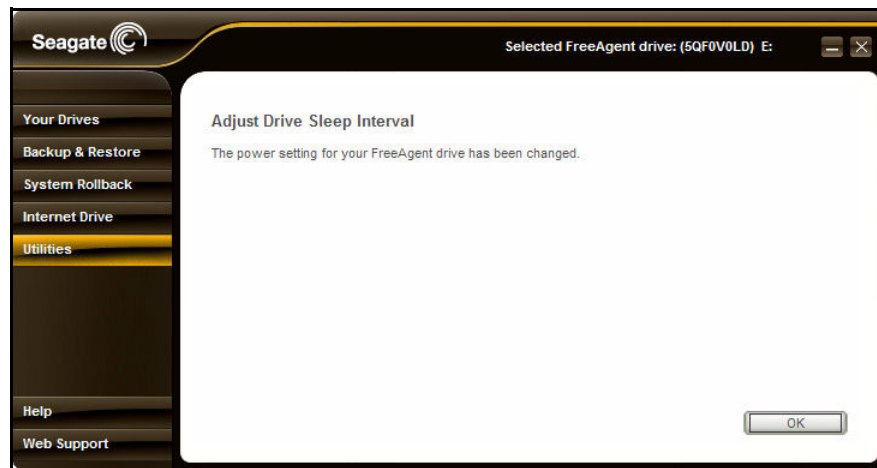


Figure 6: Power Settings Confirmed

Step 5: Click **OK** to return to the **Utilities** window.

Adjusting the Drive Lights

The lights on your FreeAgent drive pulse to indicate drive activity and status. You can turn these lights off if you wish.

To adjust the drive lights,

Step 1: Click **Utilities** on the Command panel.

The **Utilities** window opens:

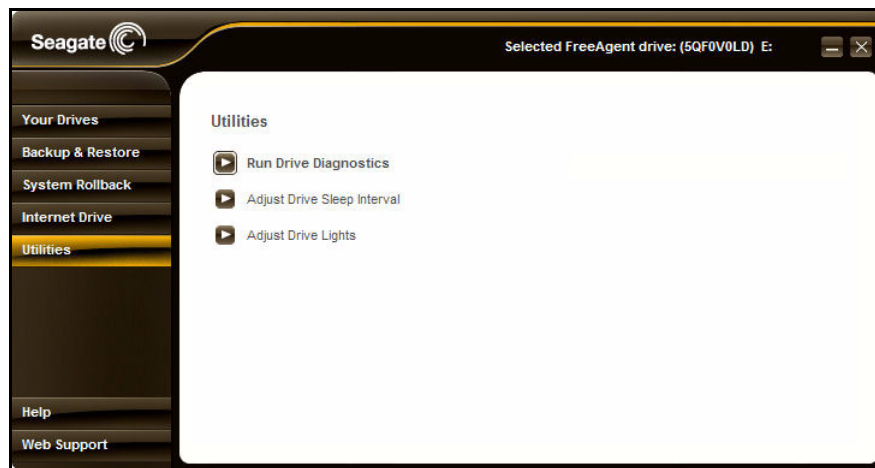


Figure 7: Utilities Window

Step 2: Click **Adjust Drive Lights**.

The **Drive Lights** window opens:

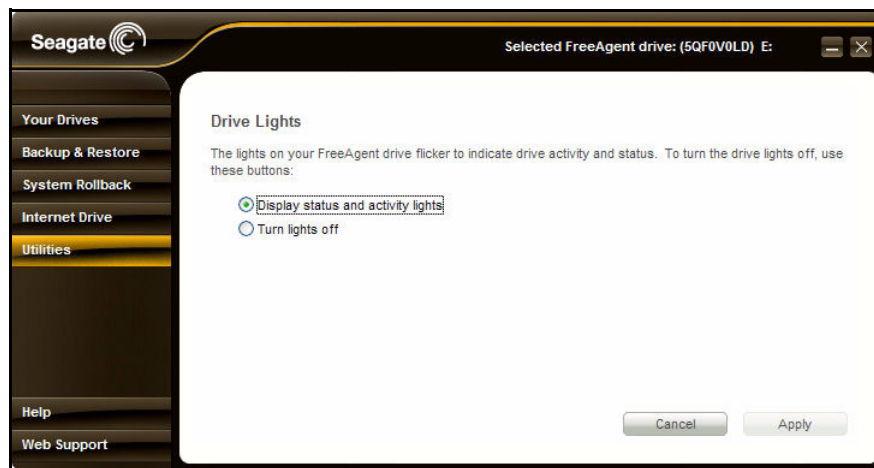


Figure 8: Drive Lights

Step 3: Choose whether to display status and activity lights on your drive.

Step 4: Click **Apply** to return to the **Utilities** window.

Index

Numerics

1394 Devices *3*

A

Adjusting Drive Sleep Intervals *33*

 Waking Your Drive from Sleep Mode *34*

Adjusting the Drive Lights *35*

B

Backup & Restore *15*

 Creating a Backup Plan *16*

 Registering AutoBackup *15*

C

Changing Hardware Interfaces *12*

 Switching USB/eSata - 1394 Interfaces *12*

Creating a Backup Plan *16*

Creating Automatic Restore Points *22*

Creating Manual Restore Points *23*

D

Disconnecting eSATA and 1394 Devices *2*

 1394 Devices *3*

 eSATA Devices *2*

E

eSATA Devices *2*

G

Getting Started *1*

 Installing FreeAgent Tools and AutoBackup *4*

 Safely Turning Your Drive On and Off *1*

 Using the FreeAgent Tools and AutoBackup Icons *11*

I

Installing FreeAgent Tools and AutoBackup *4*

Internet Drive *29*

M

Managing Your Drives *14*

R

Registering AutoBackup *15*

Restore Points *22*

Rolling Back to a Restore Point *24*

Running Drive Diagnostics *31*

S

Safely Turning your Drive On and Off *1*

 Disconnecting eSATA and 1394 Devices *2*

Switching USB/eSata - 1394 Interfaces *12*

System Rollback *22*

 Creating Manual Restore Points *23*

 Rolling Back to a Restore Point *24*

 Turning Off Automatic Restore Points *27*

 Undoing System Rollback *26*

T

Turning Off Automatic Restore Points *27*

U

Undoing System Rollback *26*

Using the FreeAgent Tools and AutoBackup Icons *11*

Utilities *31*

 Adjusting Drive Sleep Intervals *33*

 Adjusting the Drive Lights *35*

 Running Drive Diagnostics *31*

W

Waking Your Drive from Sleep Mode *34*